

What's In It for Me?

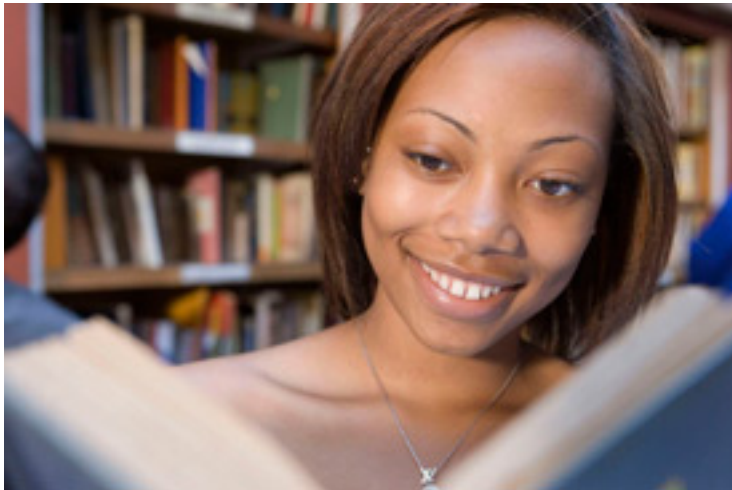


QEP Menu

[Full QEP Report](#)

[QEP Home](#) | [QEP Summary](#) | [QEP Outcomes](#) | [What's In It for Me?](#) | [Things to Know](#) | [Timeline](#) | [Committees](#) | [QEP Minutes](#) | [Resources](#) | [FAQ](#)

The Lee College Quality Enhancement Plan (QEP) is designed to help students develop the skills they need to navigate the educational process as well as set and achieve their educational and career goals in the modern world. To achieve this, Lee College will implement changes that convert diverse college systems into a unified process serving as a compass for students on their educational journey.



STUDENTS

- Clear academic plan
- Support in the selection of coursework
- Acquire skills in applying knowledge
- Career exploration
- Resume writing
- Develop an e-portfolio for lifetime use
- Personalized advising
- Make connections with university transfer and employers



FACULTY & STAFF

- Help students complete their goals
- Integrate into the student portfolio — service learning, honors, undergraduate research, internships, international education, and special projects
- Training in e-portfolio software
- Training in student self-assessment in video use
- Training and use of career exploration software
- Professional development activities
- Exposure to best practices through training and networks
- Training in Inspire for Advisors



PARENTS

- Increase students' ability to make informed career pathway decisions
- Reduce college debt through a clear pathway to employment
- Increase completion rates
- Support of transfer to four-year colleges and universities
- Increase students' competitive advantage for jobs
- Accelerate degree completion
- Increase students' competitive advantage for scholarships



BUSINESS & INDUSTRY

- Identify marketable skills and support in developing skills
- Produce socially aware residents
- Job shadowing
- Internships and co-ops
- Talent acquisition
- Documented co-curricular experiences

[FIND A CAREER](#)
[My Next Move](#)